



IC-1520DP / IC-1520DPg / IC-1520POE

# Wire / Wireless / Power over Ethernet Digital Pan/Tilt Internet Camera

## Quick Installation Guide

Version: 1.0 (October, 2007)

# Multi-Languages QIG on the CD

---

**Český:** Českého průvodce rychlou instalací naleznete na přiloženém CD s ovladači

**Deutsch:** Finden Sie bitte das deutsche S.A.L. beiliegend in der Treiber CD

**Español:** Incluido en el CD el G.R.I. en Español.

**Français:** Veuillez trouver l'français G.I.R ci-joint dans le CD

**Italiano:** Incluso nel CD il Q.I.G. in Italiano.

**Magyar:** A magyar telepítési útmutató megtalálható a mellékelt CD-n

**Nederlands:** De nederlandse Q.I.G. treft u aan op de bijgesloten CD

**Polski:** Skrócona instrukcja instalacji w języku polskim znajduje się na załączonej płycie CD

**Português:** Incluído no CD o G.I.R. em Portugues

**Русский:** Найдите Q.I.G. на русском языке на приложенном CD

**Slovensky:** Anglického sprievodcu rýchlou inštaláciou nájdete na priloženom CD s ovládačmi.

**Romana:** Cd-ul cuprinde Ghid de instalare rapida in limba romana

**Türkçe:** Ürün ile beraber gelen CD içinde Türkçe Hızlı Kurulum Kılavuzu'nu bulabilirsiniz

# Content

1. Check your package contents .....	1
1.1. System Requirement .....	2
2. Hardware Installation .....	2
2.1. LED and Focusing .....	2
2.2. Installation Procedure .....	5
2.3. Locate the IP Address.....	6
3. Web Management Interface.....	10
4. Software Installation.....	13
4.1 Firmware Upgrade.....	21

Copyright© by Edimax Technology Co, LTD. all rights reserved. No part of this publication may be reproduced, transmitted, transcribed, stored in a retrieval system, or translated into any language or computer language, in any form or by any means, electronic, mechanical, magnetic, optical, chemical, manual or otherwise, without the prior written permission of this Company .

This company makes no representations or warranties, either expressed or implied, with respect to the contents hereof and specifically disclaims any warranties, merchantability or fitness for any particular purpose. Any software described in this manual is sold or licensed "as is". Should the programs prove defective following their purchase, the buyer (and not this company, its distributor, or its dealer) assumes the entire cost of all necessary servicing, repair, and any incidental or consequential damages resulting from any defect in the software. Further, this company reserves the right to revise this publication and to make changes from time to time in the contents hereof without obligation to notify any person of such revision or changes.

The product you have purchased and the setup screen may appear slightly different from those shown in this QIG. For more detailed information about this product, please refer to the User's Manual on the CD-ROM. The software and specifications subject to change without notice. Please visit our web site [www.edimax.com](http://www.edimax.com) for the update. All right reserved including all brand and product names mentioned in this manual are trademarks and/or registered trademarks of their respective holders .

### Linux Open Source Code

Certain Edimax products include software code developed by third parties, including software code subject to the GNU General Public License ("GPL") or GNU Lesser General Public License ("LGPL"). Please see the **GNU** ([www.gnu.org](http://www.gnu.org)) and **LPGL**([www.gnu.org](http://www.gnu.org)) Websites to view the terms of each license.

The GPL Code and LGPL Code used in Edimax products are distributed without any warranty and are subject to the copyrights of their authors. For details, see the GPL Code and LGPL Code licenses. You can download the firmware-files at <http://www.edimax.com> under "Download" page.

Thank you for purchasing Edimax Internet IP camera! This IP camera is an ideal product for all kinds of video-surveillance purposes, like home/office safety, kid/pet monitoring, and remote video acquire etc. Unlike conventional close-circuit video camera, you're not limited to the length of cable! Once this IP camera is connected to Internet, you can receive video from anywhere in the world where Internet access is available.

Some people may concern that there will be some places which will not be covered by camera, but this problem is completely solved by this IP camera. With built-in pan-tilt function, you can point the camera to the position where you wish to look at with user interface. You can even define a preset path, and the camera will cruise along the path you defined.

The quick installation for three models as follows :

IC-1520DP is a wire internet camera .

IC-1520DPg is a wireless internet camera.

IC-1520POE is a wire internet camera with power over Ethernet function .

## 1. Check your package contents

Thank you for purchasing Edimax IP camera! Before you start to use this IP camera, please check the package contents. If anything is missing, please contact the dealer of purchase and return the package to claim for missing contents.

- One Internet Camera
- One Power Adapter
- One Camera Stand
- One 100M Category 5 Ethernet Cable
- One Quick Installation Guide
- One CD (Including Manual/Utility/multi-languages QIG)
- One Antenna( **For IC-1520DPg Only**)

If any of the above items are missing, please contact your supplier.

## 1.1. System Requirement

System requirement for PC, MAC or Notebook PC to access the Internet Camera are:

- OS System: Windows 98, ME, 2000, XP + SP2, Server 2003
- CPU: Intel Pentium III 750MHz above or Intel Celeron 1GHz above
- Memory Size: 128MB (256MB recommended)
- VGA Card Resolution: 800 x 600 or above

## 2. Hardware Installation

### 2.1. LED and Focusing

The Camera head and its focus ring allow you to modify the aim and focus of the Camera.

To adjust the Camera's focus, rotate the dark focus ring.

There are three LEDs indicating the camera status and networking status.

LED Name	Status	Description
LAN	Off	Network cable is disconnected
	On	Network cable is connected
	Flash	Transferring data via LAN port
WLAN (IC-1520DPg only)	Off	No wireless LAN activity
	On	Transferring data via wireless LAN
Power	Off	Camera is not powered (camera off)
	On	Camera is correctly powered (camera on)

- **Power**

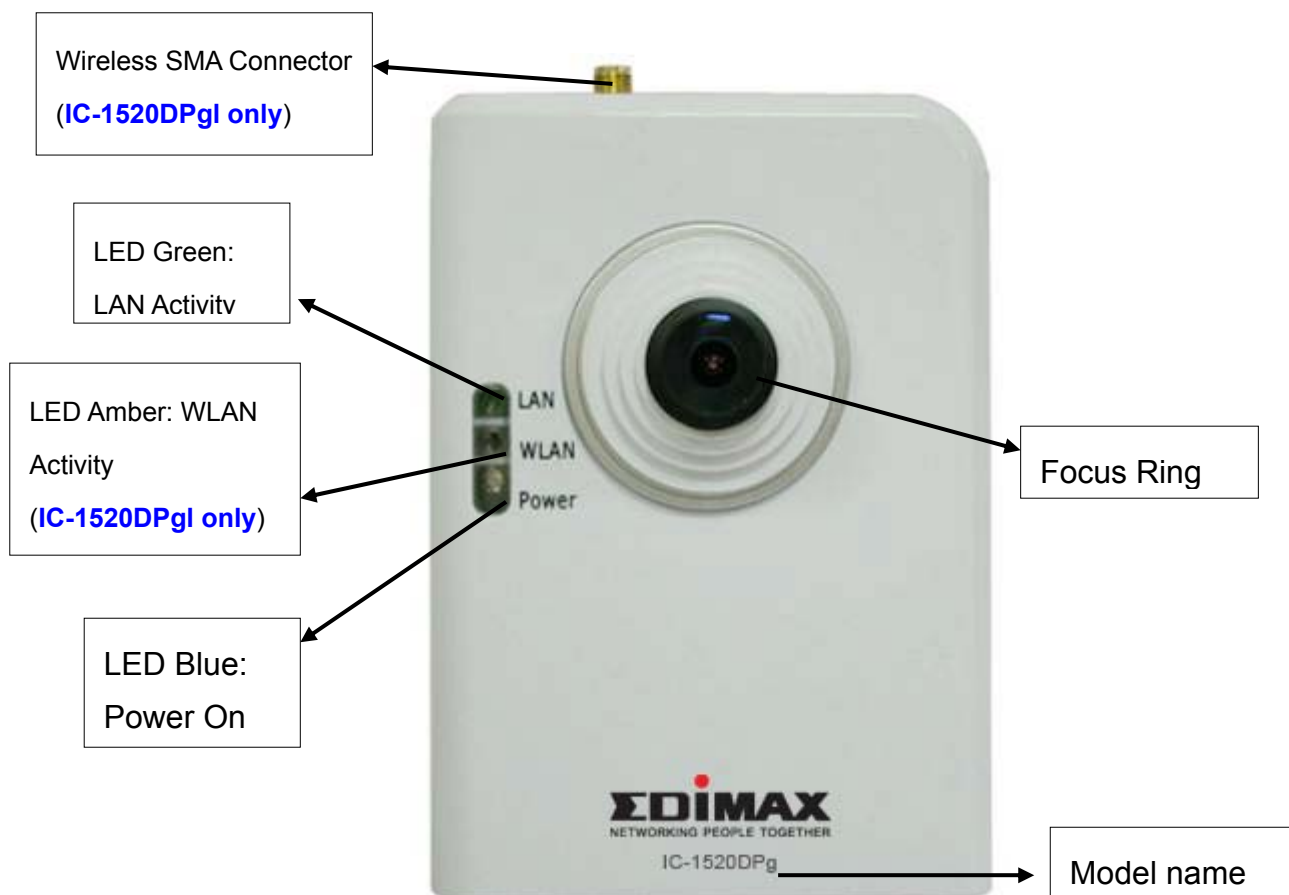
When the camera is power on and ready for access, the LED will light.

- **LAN**

When the Internet Camera is linking to wired network, the LED is lighting. The LED is flashing when video is transmitted or received through wired network.

- **WLAN ( For IC-1520DPg only )**

When the Internet Camera is linking to wireless network, the LED is lighting. The LED is flashing when video is transmitted or received through wireless network.



The Camera features two ports and a Reset button.

- **Antenna**

Standard reverse SMA connector where any antennas with reverse SMA connector can connect to the Internet Camera.

- **Power**

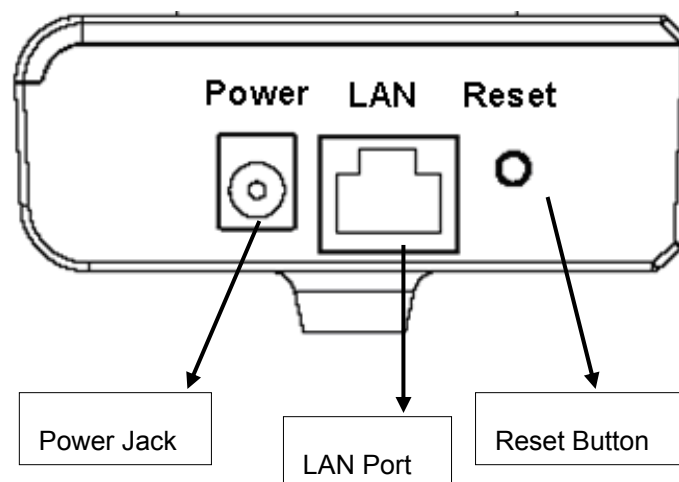
The Power jack is where you can connect the power adapter.

- **LAN**

The LAN jack is where you can connect the Ethernet network cable.

- **Reset**

1. If problems occur with your Internet Camera, press the reset button with a pencil tip (for less than 2 seconds) and the Internet Camera will reboot itself with your configurations.
2. If problems persist or you experience extreme problems or you forgot your password, press the reset button for longer than 5 seconds. The Internet Camera will reset itself to the factory default settings (warning: your original configurations will be replaced with the factory default settings).





## 2.2. Installation Procedure

1. Unpack the Internet Camera package and verify that all the items listed in the Chapter 1 are provided.
2. Connect the Internet Camera to your network by attached the network cable from the switch/router to the LAN port of the Internet Camera.
3. Connect the power adapter to the Internet Camera and plug the power adapter to power outlet. The Internet Camera will be powered on. When the Internet Camera is ready, the Ready LED will light.

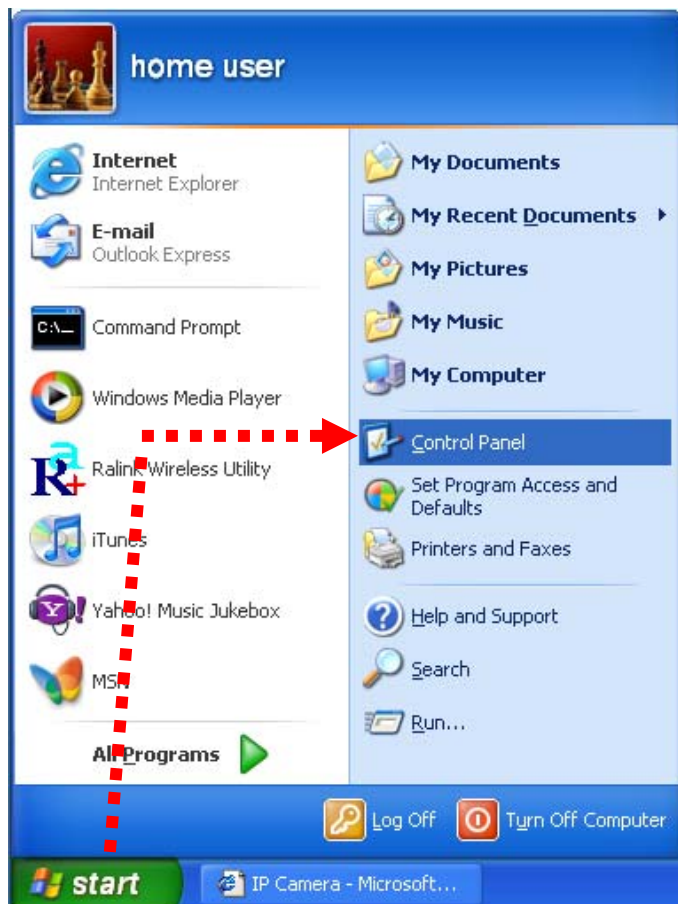
**Note:** It is highly recommended to use the power adapter shipped with the Internet Camera, do NOT use any other power adapter from any sources.

## 2.3. Locate the IP Address

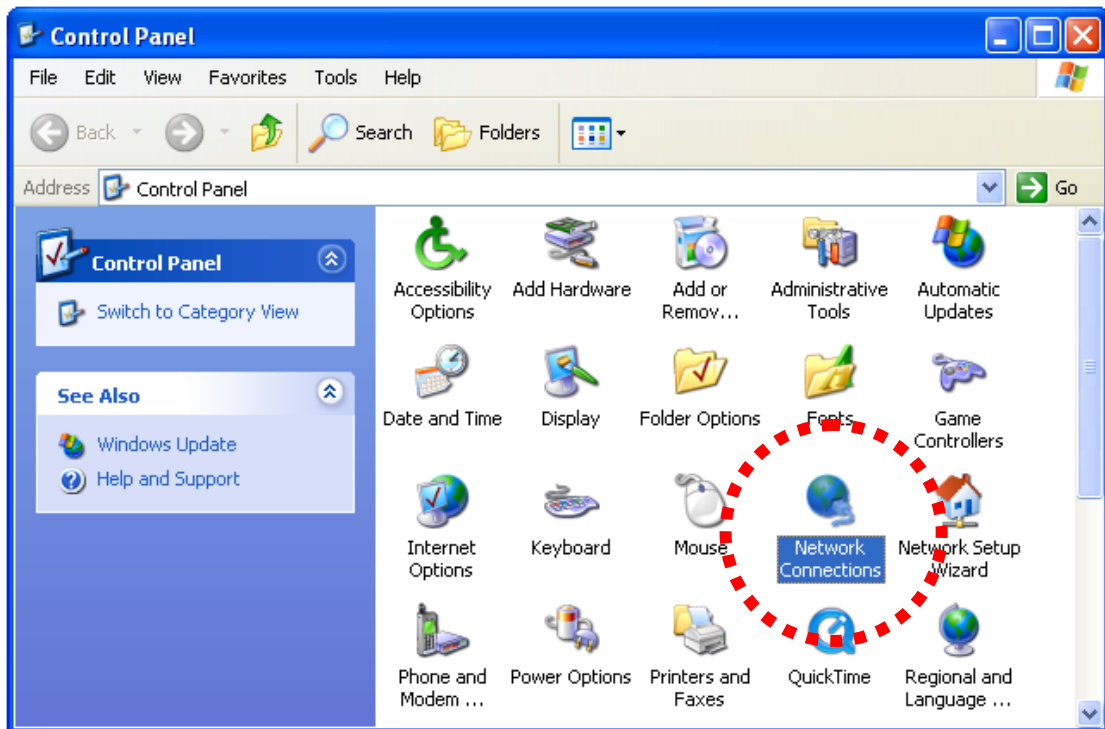
Default IP address of this IP camera is 192.168.2.3. If you wish to assign another IP address to this IP camera, you have to log onto the web configuration interface of the camera first.

If the left three fields of the IP address of your computer is not 192.168.2.XXX , you'll have to change the IP address of your computer first:

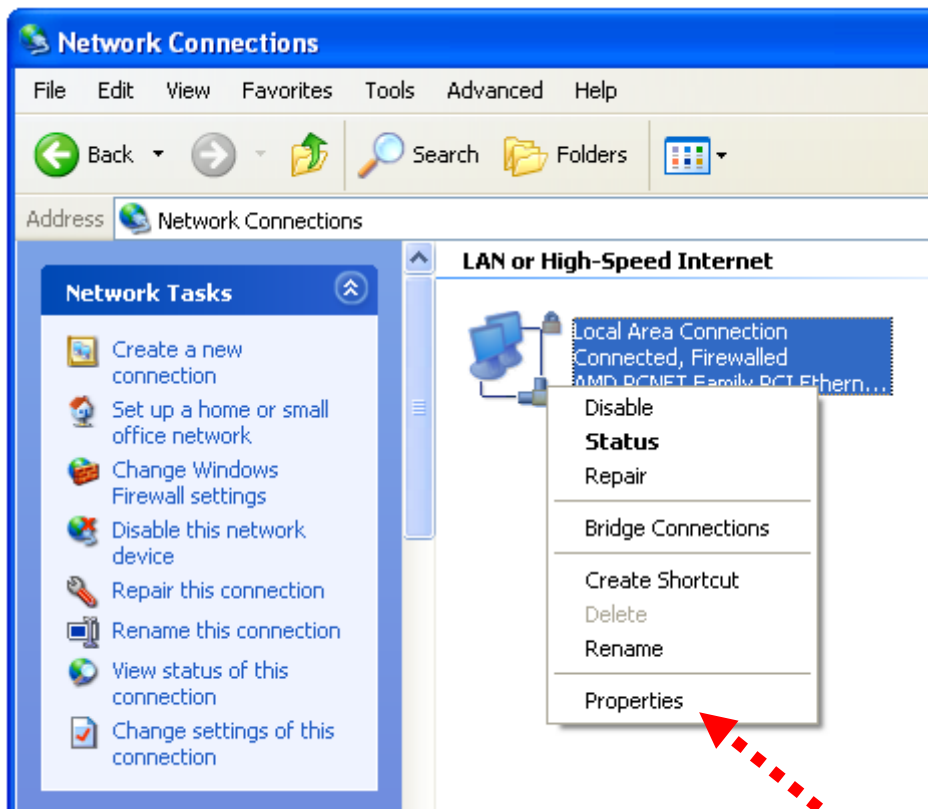
1. Click 'Start' -> 'Control Panel'



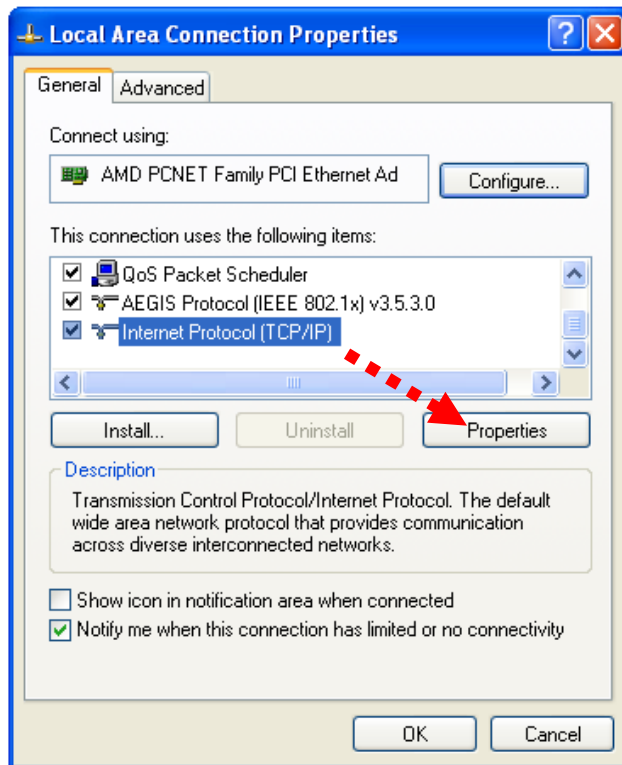
2. Double-click 'Network Connections' icon.



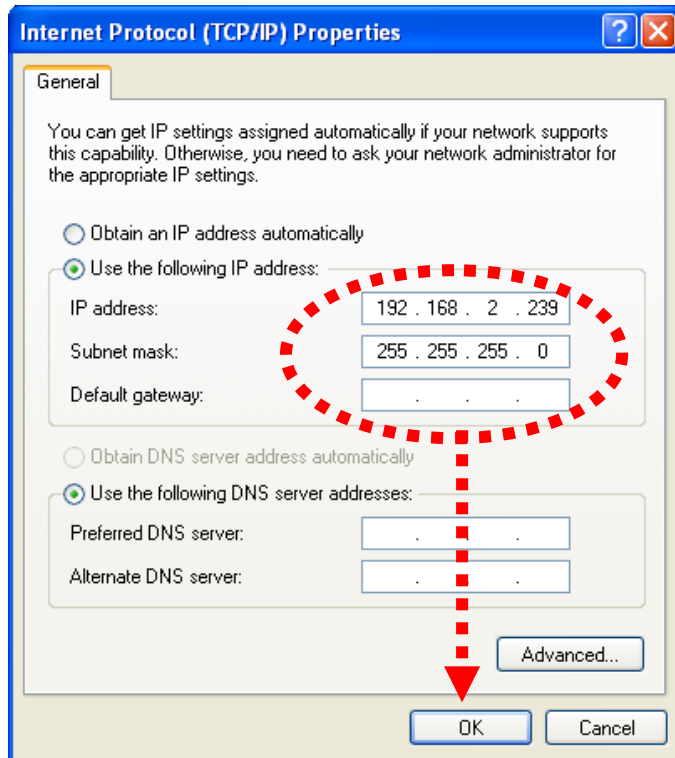
3. Right-click 'Local Area Connection', and click 'Properties'.



4. Select 'Internet Protocol (TCP/IP)', then click 'Properties'.



5. In 'IP address' field, please fill in any IP address begins with '192.168.2', and ends with a value greater than 2 and less than 254 (You can use the example in the picture '192.168.2.239'). In Subnet mask field, please fill '255.255.255.0'. Please keep all other fields empty, and click 'OK'.

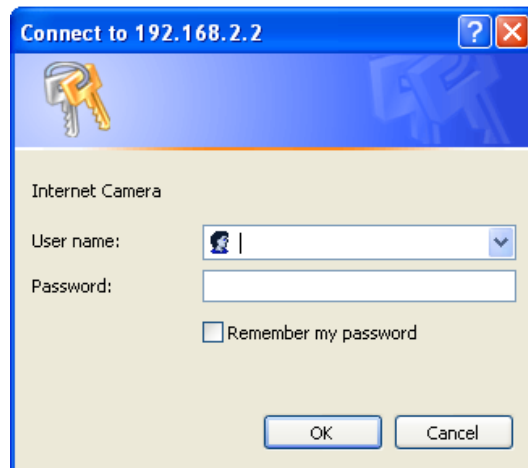


If you changed the IP address of this IP camera and you forget it, there're 2 methods to recover it:

- a. Press and hold the 'Reset' button located at the bottom of this IP camera, to clear all settings of the IP camera and reset the IP address back to 192.168.2.3. You'll lose all settings in the IP camera.
- b. Ask network administrator to check the DHCP release table, if the camera was set to obtain the IP address by DHCP, a new record will be added to DHCP release table on DHCP server when the IP camera is connected to the local area network

### 3. Web Management Interface

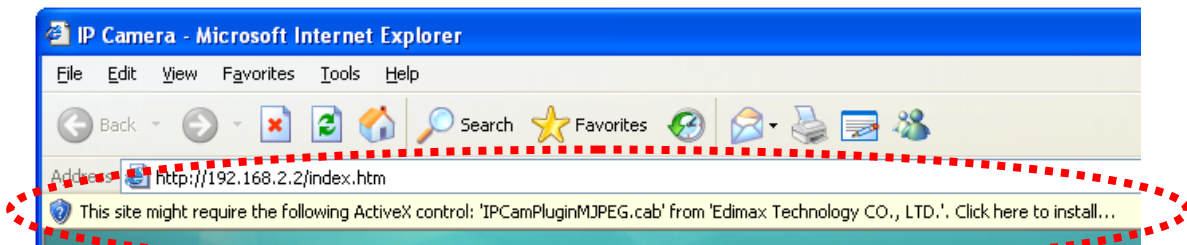
Make sure the IP camera is correctly powered (Power LED is on), and then launch Internet Explorer and type the IP address of the IP camera in address bar of Internet Explorer. You should be prompted to input the user name and password:



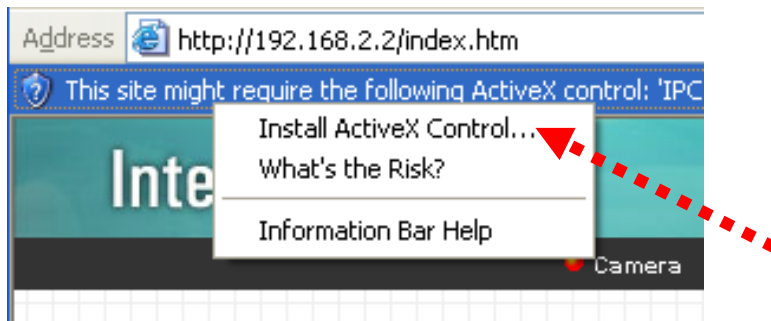
Default user name is 'admin' (in lower case) and password is '1234'. Click 'OK' to continue after user name and password has entered.

If you're rejected, maybe the password has been modified previously. This should not happen if this is a newly-purchased camera, however, if you get the camera from someone else, the password would be changed. Please try to obtain the correct user name / password, or you'll have to reset the camera.

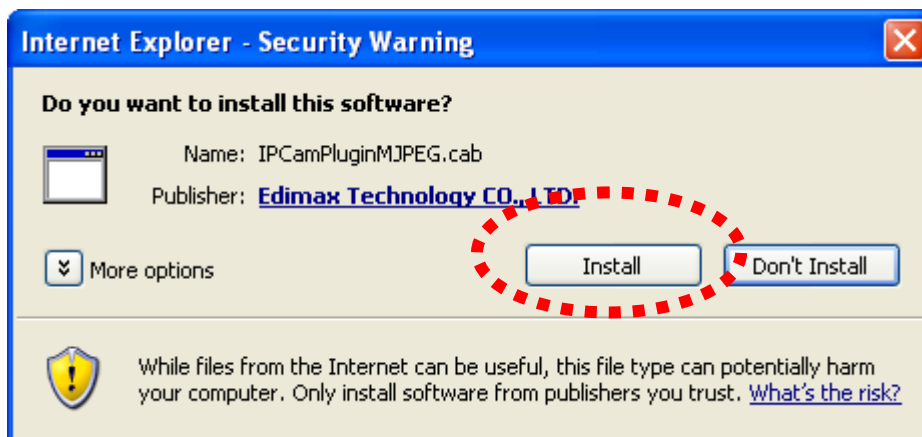
After logged on, you should see the following messages at the top of Internet Explorer:



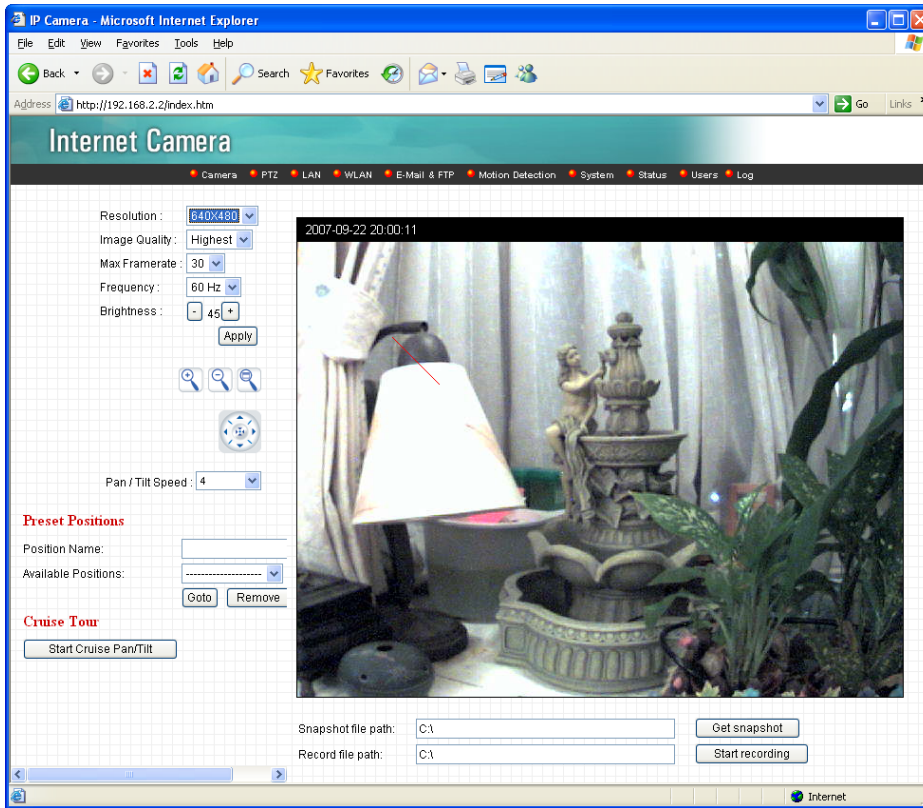
This IP camera requires a special ActiveX control (A.K.A. 'Plugin') to work. Please click on the message, and select 'Install ActiveX Control...':



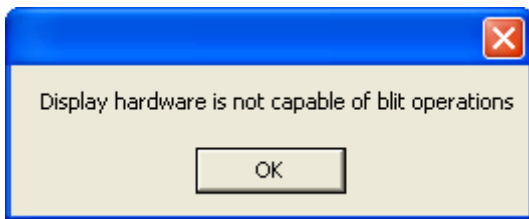
When you're prompted, click 'Install' to continue.



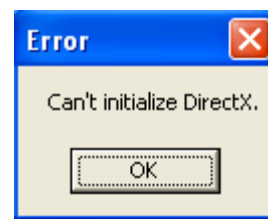
You should be able to see the image from camera now:



*Note: If you see one of these messages (or both):*



**OR**



*Your computer may not have the display capability that this IP camera requires, or you don't have Microsoft DirectX® installed. Please download Microsoft DirectX® from Microsoft's website (<http://www.microsoft.com>), and try again.*

*In some cases, your computer is able to display the image from IP camera correctly, but you'll still see these messages. If this happens, just ignore them.*



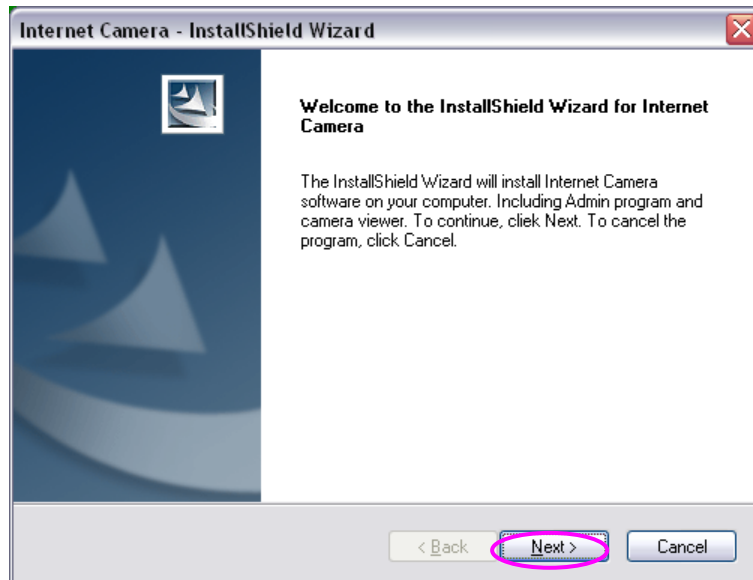
## 4. Software Installation

Follow the simple steps below to run the Install Wizard to guide you quickly through the Installation process. The following installation is implemented in Windows XP. The installation procedures in Windows 2000/XP/Server 2003 are similar.

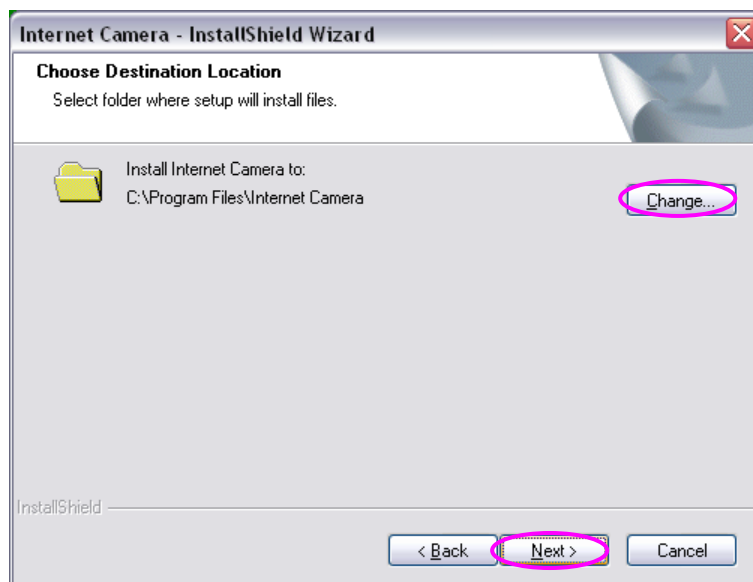
1. Insert the CD shipped along with the Internet Camera into your CD-ROM drive. The "Autorun.exe" program should be executed automatically. If not, run "Autorun.exe" manually from "Autorun" folder in the CD.
2. The Install Wizard will show four selections, select the program you want to install or click "Exit" to install the program later. The following installation steps are the demonstration of "Install Administrator Utility & Camera Viewer".



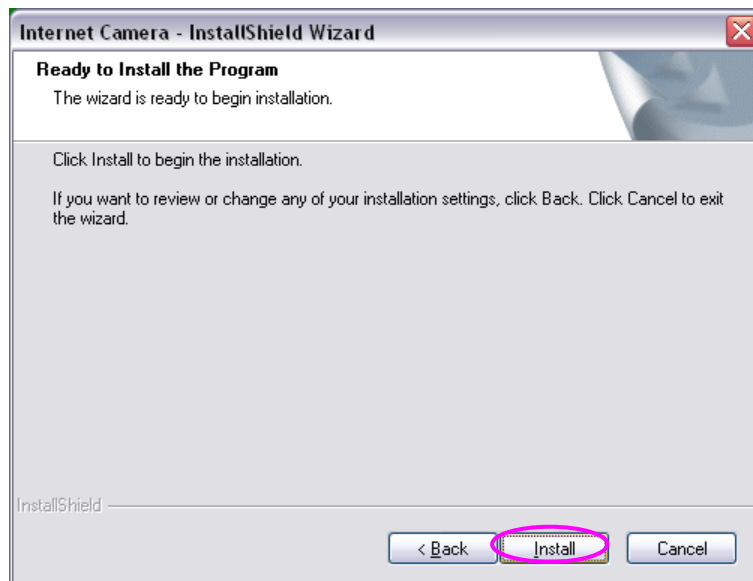
3. The system will start the installation procedures. Click “Next” to continue installation.



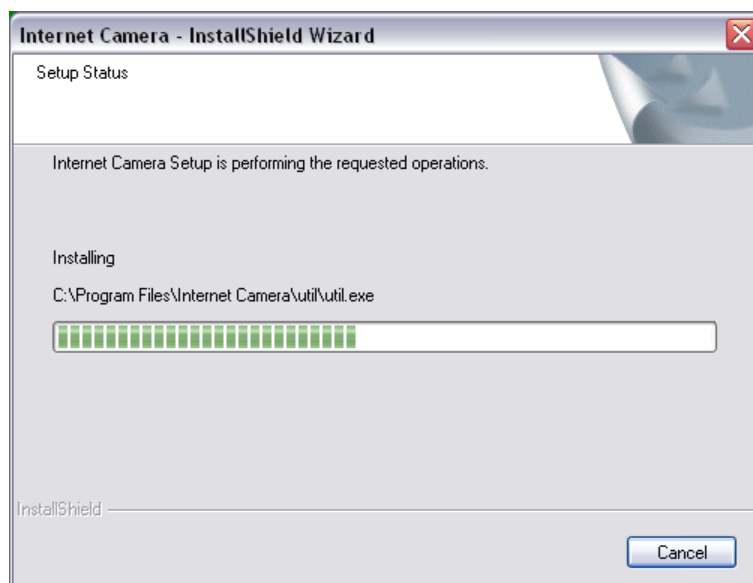
4. If you wish to install the software program in an alternate location, click “Change”; otherwise click “Next” to move on to the next step.



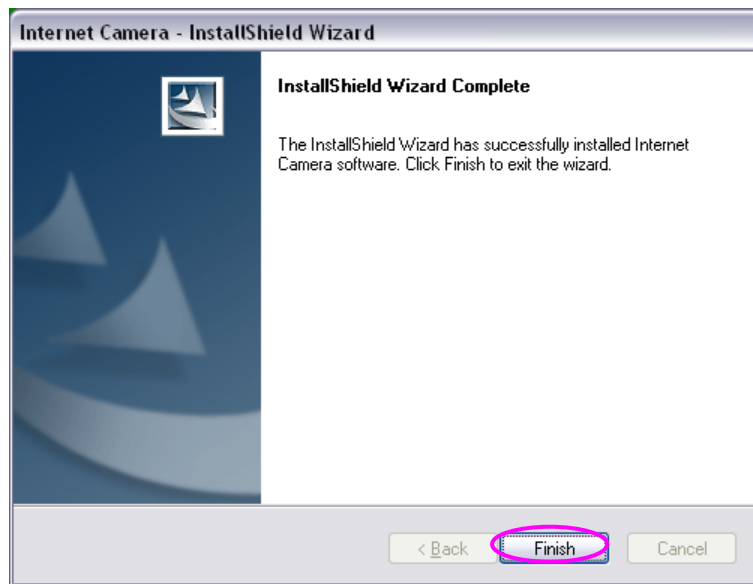
5. Click "Install" to start installing the program.



6. The system will install the program automatically.



7. Click "Finish" to complete the software installation.

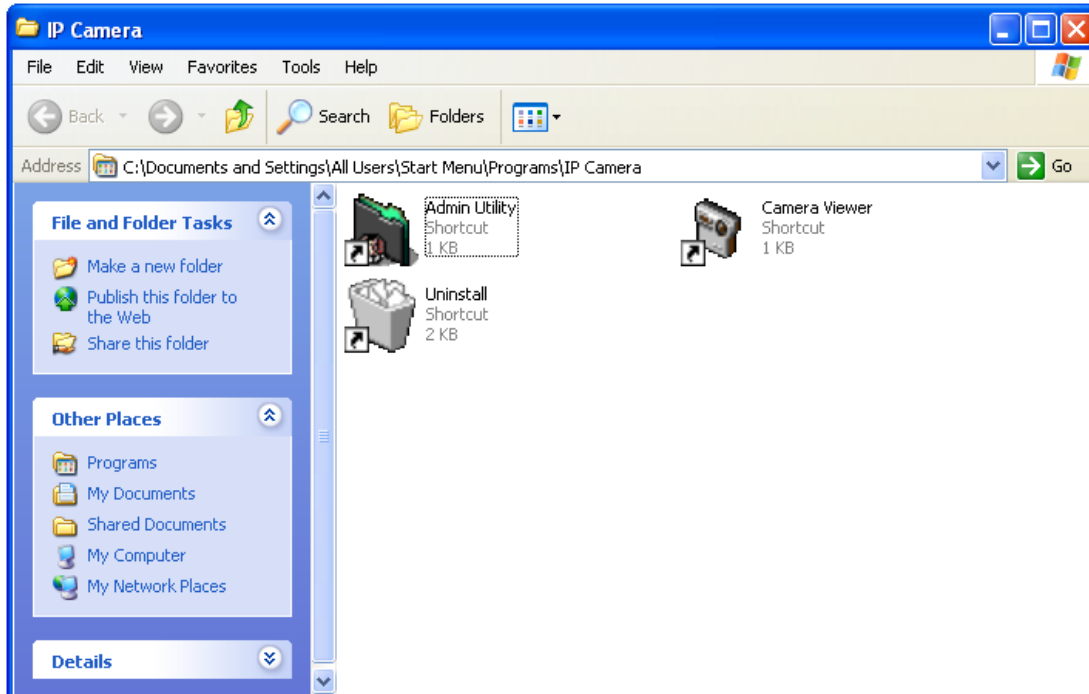


8. If you have Windows Defender (Windows XP) or other 3<sup>rd</sup> party firewall software, you may see the following (or similar) message:

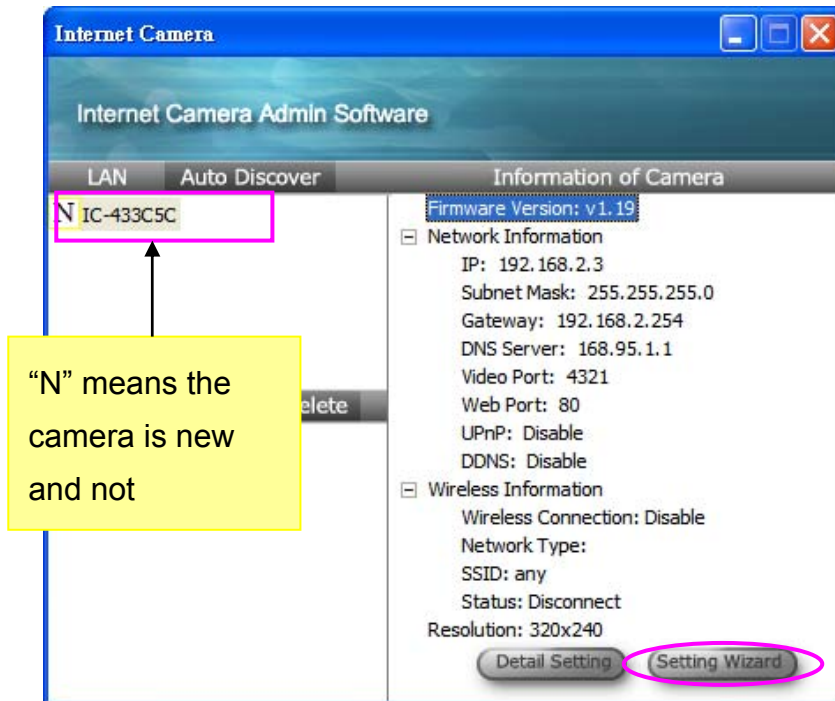


Please click 'Unblock' (or similar option) to let IP camera Utility pass the firewall, or the IP camera utility may not be able to function properly

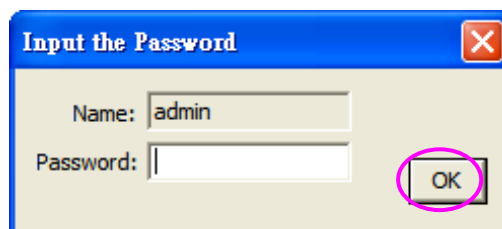
9. A new folder named 'IP Camera' in 'All Programs' will be created: Admin Utility, Camera Viewer, and Uninstall. You can use these 3 utilities to connect to the IP camera and use the functions of the camera without web browser.



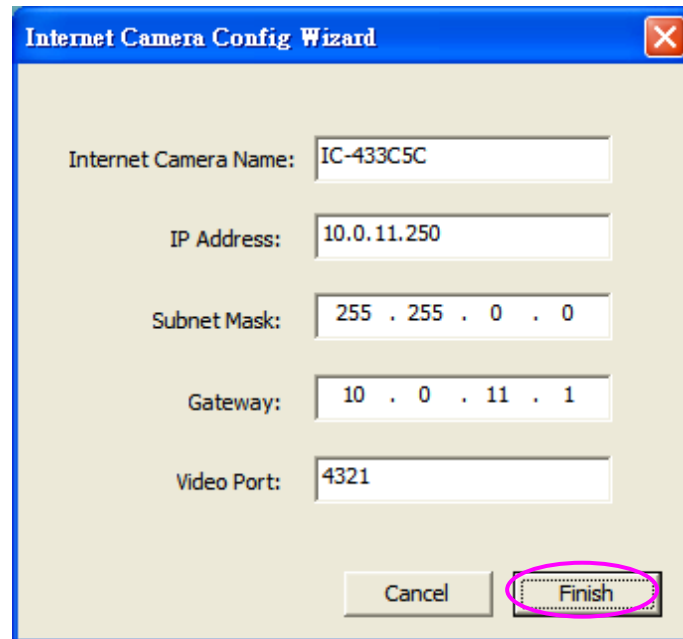
10. When the installation is completed. The system will auto run "Administrator Utility". On the Internet Camera first page, the cameras found in the network are listed in the left window. Choose the one you want to configure and click "Setting Wizard" to proceed.



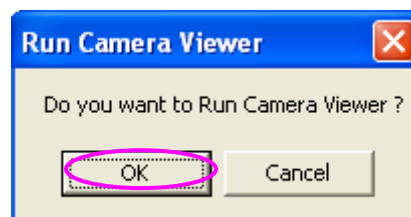
If you want to change these settings, please click 'Detail Setting' or 'Setting Wizard'. If you only need to change the basic network setting, click 'Setting Wizard'. You'll be prompted to input user name and password. The default user name is 'admin' (you can not change it), and the default password is '1234', and then click 'OK' to continue.



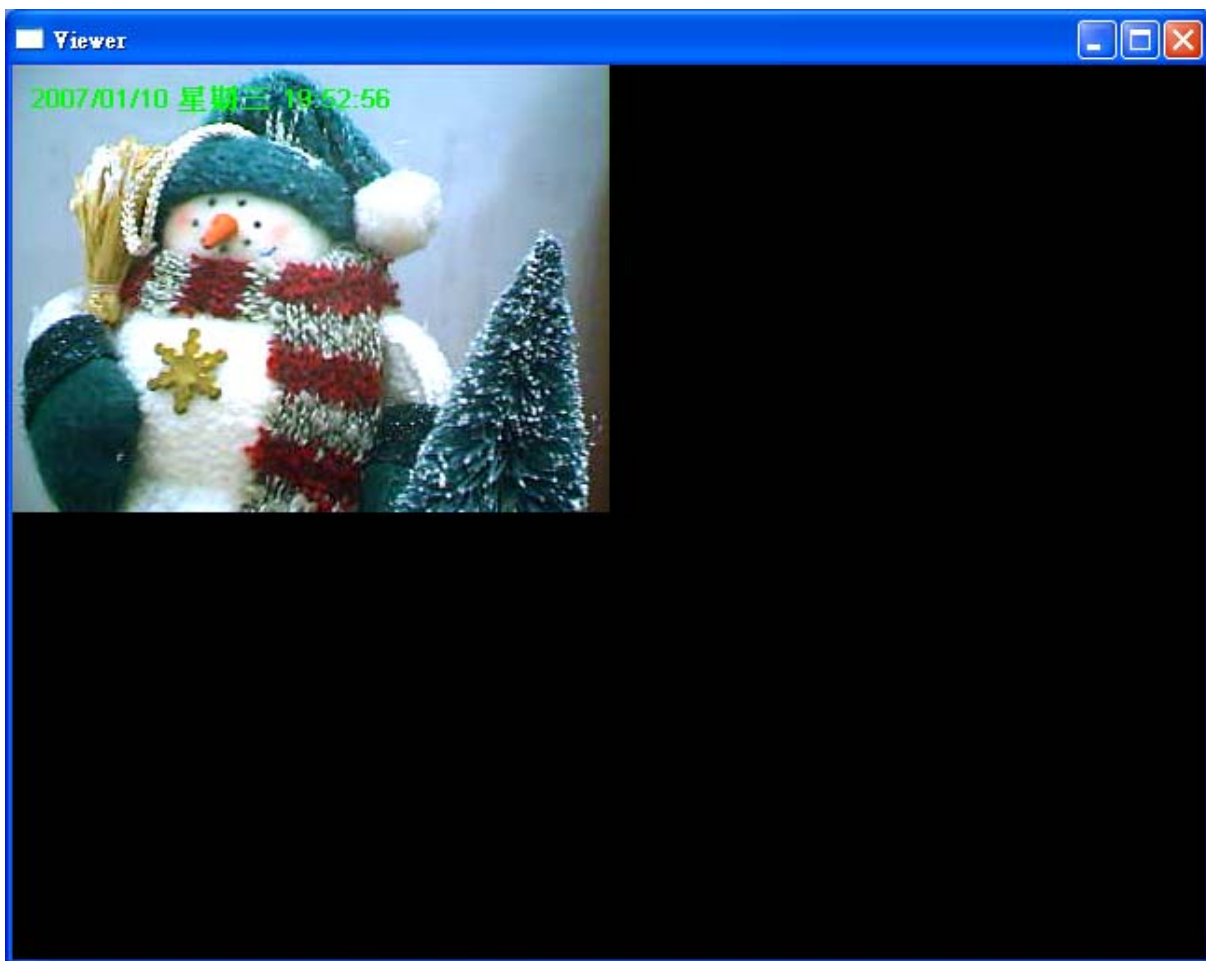
11. Internet Camera is working through the network (TCP/IP Protocol). The IP address setting must be correct, or you cannot access to the camera. The wizard program will detect the IP address status of your network automatically and suggest a free IP address for the Camera. You can accept the suggested value or enter the value manually. If you enter the value manually, please be aware that the “Subnet Mask” must be the same for both the camera and the PC. Click “Finish” to apply the configuration.



12. This wizard will pop up a window to ask you if you want to run the “Camera Viewer” and see the video of the Camera immediately. Select “OK” to run “Camera Viewer”.



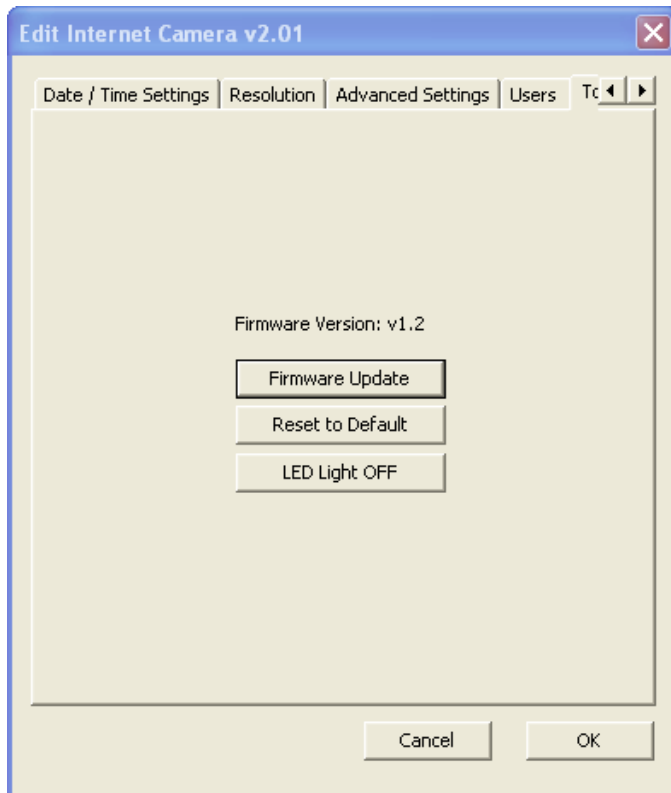
13. The “Camera Viewer” will show the video automatically. Congratulations, you can use the camera through the network to view the video from now on.





## 4.1 Firmware Upgrade

Here provides several tools to upgrade the firmware of this IP camera, clear all settings, or switch LED notification off.



The descriptions of every setting in this menu will be given below:

Item	Description
Upgrade Firmware	<p>If you downloaded latest firmware file from our website, you can click this button to start to upload the firmware file to the IP camera, and you'll be prompted to provide the location of firmware file. Click 'Open' to start uploading new firmware and IP camera will start upgrading, please be patient. The IP camera will reboot after the upgrade procedure is done.</p>
Reset to Default	<p>Clear all settings in the camera. Please think again before you do this, and then click this button to reset all settings.</p> <p><i>NOTE: IP address will be reset to default value '192.168.2.3' also. You'll need to change the IP address setting of your computer if the IP address of your computer does not begin with '192.168.2', and subnet mask is not '255.255.255.0', or you'll not be able to connect to this IP camera again.</i></p>
LED Light OFF	<p>Switch the LED light of this IP camera off, so 'LAN' and 'WLAN' LED on the IP camera will stop working, in case you don't want other people know the camera is transferring data.</p> <p>You can click this button again to switch LED lights on again.</p>

After all settings are completed, click 'OK' to save settings, or click 'Cancel' to abort and discard changes.

**R&TTE Compliance Statement**

This equipment complies with all the requirements of DIRECTIVE 1999/5/EC OF THE EUROPEAN PARLIAMENT AND THE COUNCIL of March 9, 1999 on radio equipment and telecommunication terminal Equipment and the mutual recognition of their conformity (R&TTE)

The R&TTE Directive repeals and replaces in the directive 98/13/EEC (Telecommunications Terminal Equipment and Satellite Earth Station Equipment) As of April 8, 2000.

**Safety**

This equipment is designed with the utmost care for the safety of those who install and use it. However, special attention must be paid to the dangers of electric shock and static electricity when working with electrical equipment. All guidelines of this and of the computer manufacture must therefore be allowed at all times to ensure the safe use of the equipment.

**EU Countries Intended for Use**

The ETSI version of this device is intended for home and office use in Austria, Belgium, Denmark, Finland, France, Germany, Greece, Ireland, Italy, Luxembourg, the Netherlands, Portugal, Spain, Sweden, and the United Kingdom.

The ETSI version of this device is also authorized for use in EFTA member states: Iceland, Liechtenstein, Norway, and Switzerland.

**EU Countries not intended for use**

None